



Surprising definition meets power!
A polyvalent 15" system with accurately designed components,
raising its performance to the maximum level. Now, all in neodymium!

KEY FEATURES

TRANSDUCER TECHNOLOGY

Active two-way speaker system composed by one direct radiating 3-inch voice coil, neodymium magnet, 15" low frequency woofer and one 1.75-inch voice coil, PETP diaphragm, neodymium magnet driver loaded in an asymmetrical dispersion horn.

AMPLIFICATION

700 W 3rd generation Class D built-in amplifier controlled by a dedicated DSP.

90% efficiency amplifier SMPS (switching mode power supply), allowing maximum power with minimum consumption in an extremely low-weight size.

Rear connections and control aluminium connectors panel with graphic LCD screen to display the different settings, presets, volume and adjustments done by the user. A capacitive keyboard guarantees the reliability of the system even under humidity and extreme weather conditions.

Double PowerCon (input & link).

DSP & CONTROL

Internal DSP with all necessary signal processing (crossovers, EQs, delay, limiters, gain control, mute, input overload, ALC) as well as several useful presets to adjust JK15NA to different requirements.

The on-screen output power display and the front limiter led help to easily monitor the system.

ALC (adaptive loudness compensation) to improve the listening experience when the cabinet is used at low musical levels.

DESIGN & ACCESSORIES

Ergonomic handles for an easy handling.

Several accessories allow easy flying. A 35 mm socket for mounting the loudspeaker on a speaker stand is provided at the bottom of the cabinet.

Unique design with black micro-foam cloth

M8 rigging points.

Multilayer wooden plywood cabinet with Polyurea® coating, offering maximum reliability and strength for high demanding applications.



ASYMMETRICAL
DISPERSION HORN



LIGHT NEODYMIUM
COMPONENTS



MULTIPLE PRESETS
AVAILABLE



ACCESSORIES FOR
EASY INSTALLATIONS



HIGH RESISTANT
POLYUREA® PAINT

TECHNICAL FEATURES

Amplifier (program power)	600 W (LF) + 100 W (HF) – Class D Bi-amplified
Input sensitivity	8 dBu – 1.94 V
Input Impedance	20 kΩ Balanced
Maximum input level	20 dBu
Mains	Universal Switch Mode Power Supply 85-265 V/45-65 Hz
Average current draw	0.7 A (Heavy duty musical program)
SPL (1 m)	127 dB continuous, 130 dB peak
Built-in DSP	48 bit (including several factory presets)
AD/DA converters	24 bit – 48 kHz
Standby mode consumption	< 5 W
Adjustable Delay line	118 ms / 40 m
Crossover frequency	1k3Hz
Frequency response (-10 dB)	45 Hz – 19 kHz
Components LF-MF HF	15" neodymium woofer (3" voice coil) 1.75" PETP diaphragm neodymium driver
Directivity (HxV)	50° to 100° x 55°
Directivity factor (Q)	12.6
Directivity index (DI)	11 dB
Weight	23.5 kg
Dimensions (HxWxD)	689 x 460 x 450 mm
Finish	Multilayer plywood with high resistant black Polyurea® coating
Grille	1.5 mm steel with black micro-foam cloth
Rigging	M8 points
Connectors	1x XLR input / 1x XLR link / 1x AC PowerCon input / 1x AC PowerCon link



BOTTOM VIEW



TOP VIEW



FRONTAL VIEW
WITHOUT GRILLE



SIDE VIEW

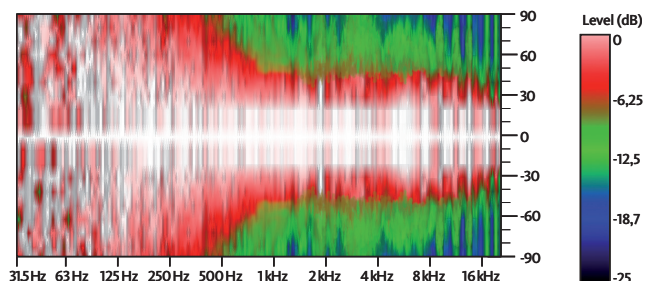


REAR VIEW

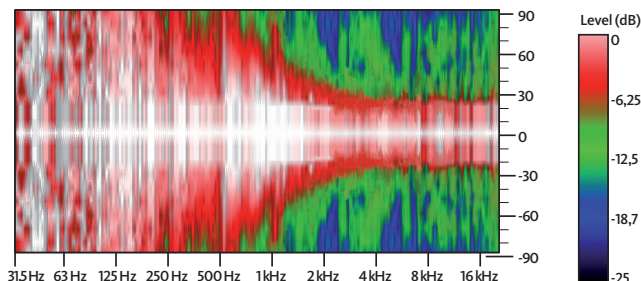


CONNECTION PANEL

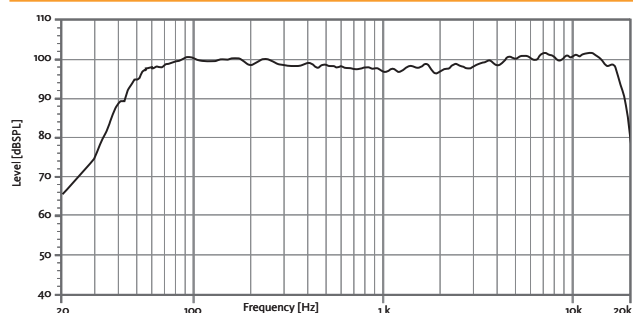
HORIZONTAL COVERAGE



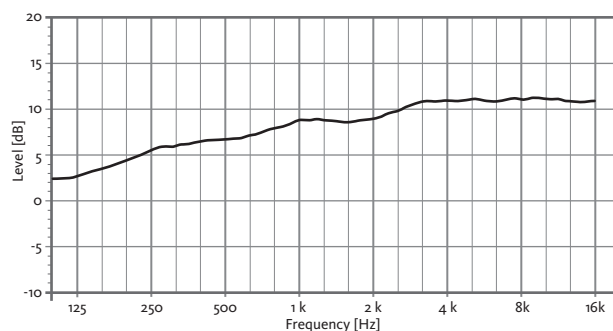
VERTICAL COVERAGE



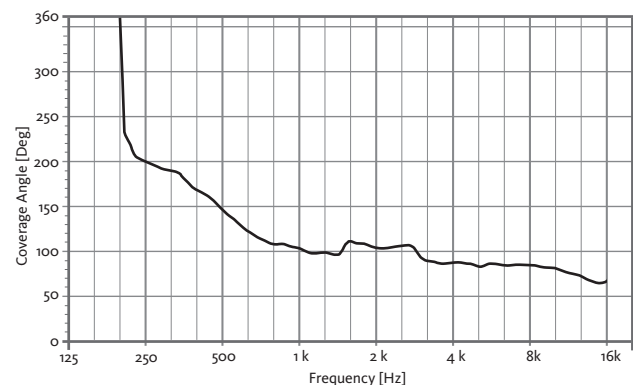
FREQUENCY RESPONSE 1W/1m (FLAT PRESET)



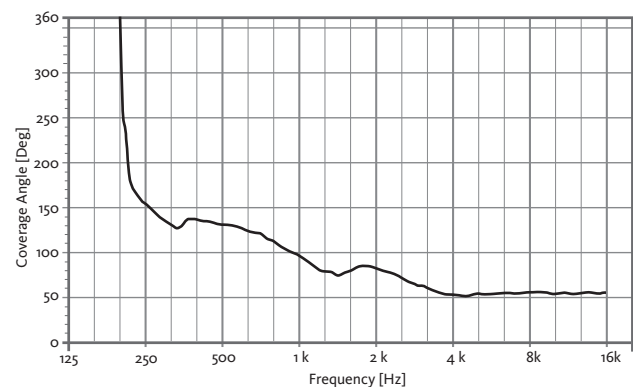
DIRECTIVITY INDEX (DI)



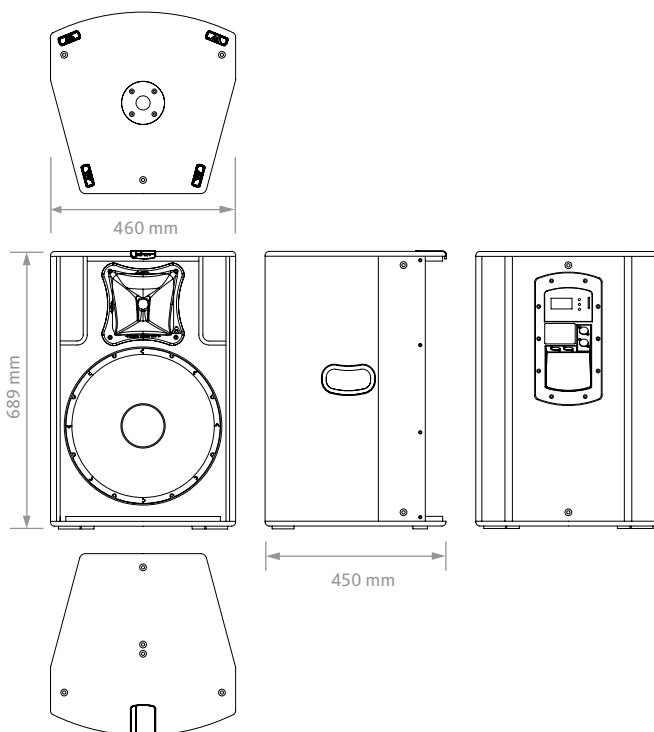
HORIZONTAL BEAMWIDTH (-6dB point)



VERTICAL BEAMWIDTH (-6dB point)



CAD DRAWING SCHEME



PRESETS

FLAT

Flat response

NEARFIELD

-3 dB mid frequencies
(800 Hz – 3 kHz)

NEARFIELD+

-3 dB mid frequencies
(200 Hz – 3 kHz)

SPEECH

-6 dB low/ -6 dB high

LONGTHROW

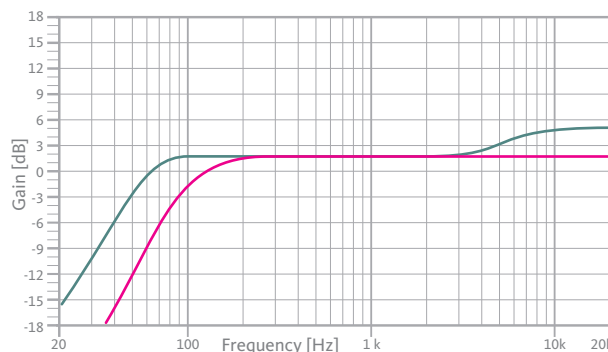
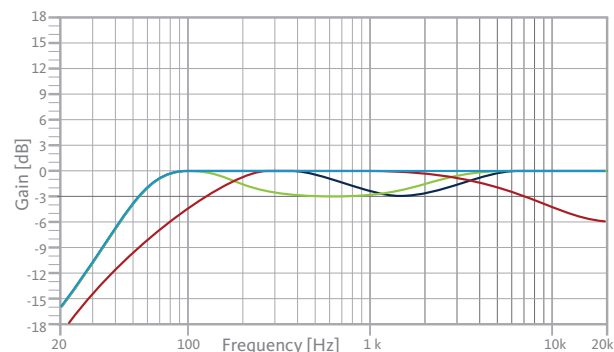
+3 dB high frequencies

XO ALL

HPF 100 Hz
+ no delay

XO POLE

HPF 100 Hz
+ fixed delay



ACCESSORIES

FLIGHT CASE

FC-JK15 for two units of JK15NA



PROTECTIVE COVER

NC-JK15



WALL MOUNT BRACKET

UB-L



TELESCOPIC DISTANCE ROD

SP/CRTL

Ø: 35 mm

Length: 55 cm ~ 90 cm

Thread: M20



FLYING BAR

HR-L



FLYING BAR WITH 50 mm HOOK

HR-L/GT



M8 RIGGING EYEBOLT

ACR-M8



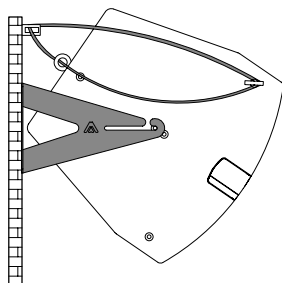
SAFETY SLING

SC-15



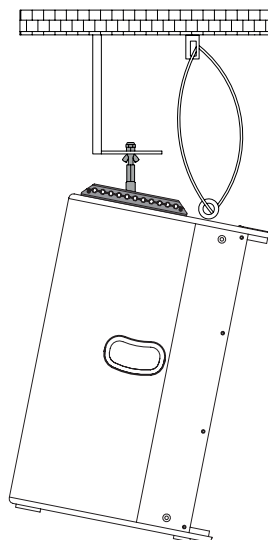
HORIZONTAL WALL-MOUNT

UB-L + SC-15



VERTICAL COLUMN-MOUNT

HR-L + SC-15



VERTICAL TRUSS-MOUNT

HR-L/GT + SC-15

